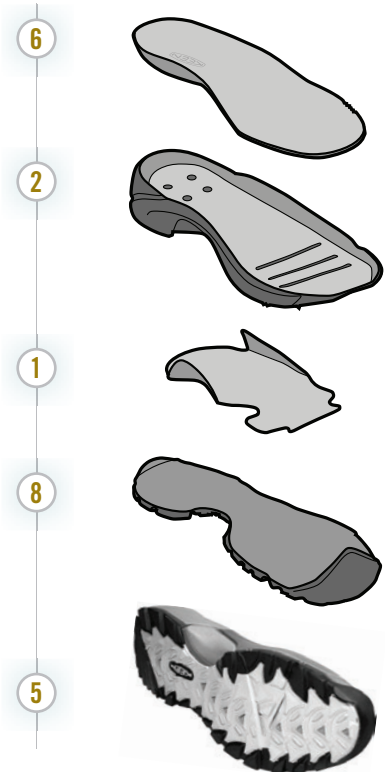


RIDGELINE

Go Explore.



FEATURES

1. SOFT FLEX TPU STONE BRUISING PLATE GUARDS FEET AGAINST ROCKS ON THE TRAIL
2. S3 HEEL SUPPORT STRUCTURE
3. FOREFOOT Y-FLEX GROOVES
4. ANTI-BUNCH ASYMMETRICAL FLEX LACE SYSTEM
5. MULTI-DIRECTIONAL 3 MM LUG OUTSOLE FOR TRACTION
6. REMOVABLE TRI-DENSITY FOOTBED GUIDES FOOT ON IMPACT
7. REFLECTIVE WEBBING
8. CARBON RUBBER NON-MARKING OUTSOLE

SPECS

WEIGHT	13.4 OZ / 380 GRAMS (MEN) 10.5 OZ / 297 GRAMS (WOMEN)
UPPER	SYNTHETIC MESH, WEBBING
LINING	MOISTURE WICKING WOVEN TEXTILE
RUBBER	CARBON NON-MARKING
SIZE RANGE	7-15 (1/2 THRU 12) MEN 5-11 (1/2 THRU 11) WOMEN

FEATURED TECHNOLOGY



ENGINEERED TO SUPPORT THE FOOT ON IMPACT, DISSIPATE SHOCK AND REDUCE YOUR ODDS OF TWISTING AN ANKLE.

